



جامعة الملك عبد الله  
للعلوم والتقنية  
King Abdullah University of  
Science and Technology

Accommodation  
Services

# Residential Landscaping Gardening Services

The pride that goes into maintaining a pleasant residential environment and its well-appointed features, comes from working together with the KAUST community.

Front Gardens

Planting in  
Front Gardens

Back Gardens

Frequently  
Asked Questions

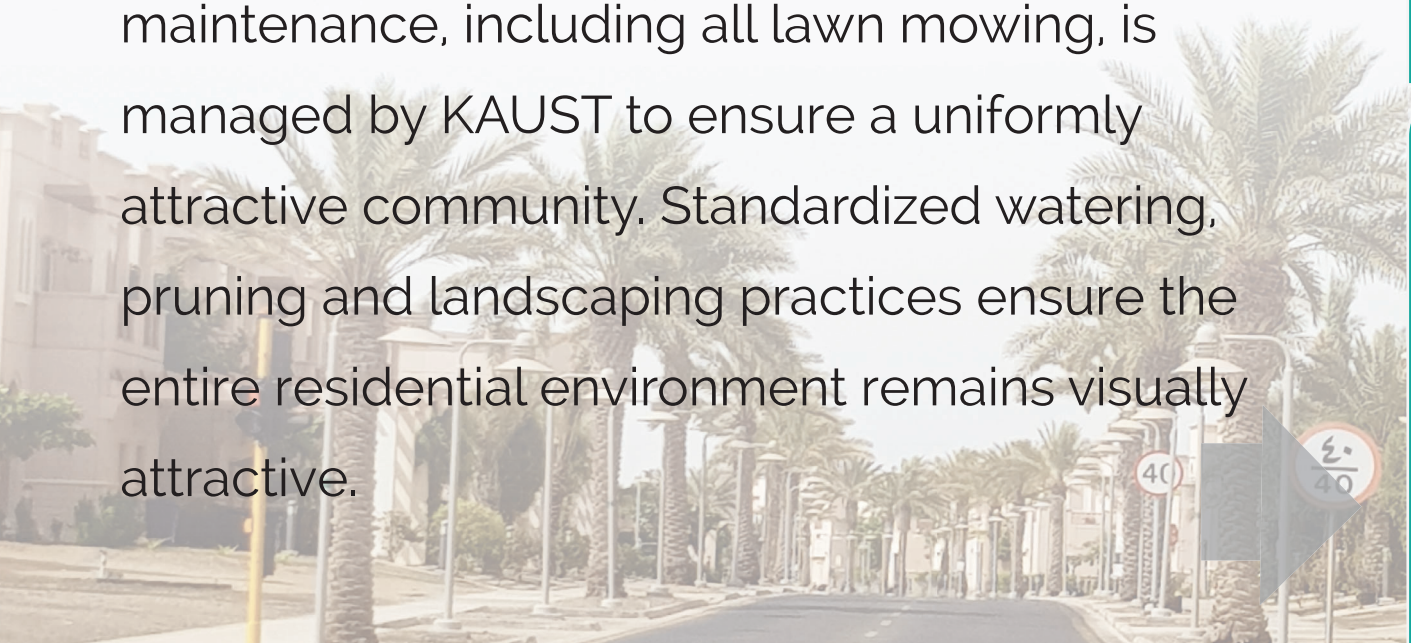


## Our Residential Landscape

Landscaping in the general residential environment includes soft landscaped community spaces, often incorporating playgrounds and hard landscaping which includes block paving and concreted parking spaces. Our various open spaces differ in character with a variety of trees and shrub planting. Large mature palm trees are commonplace in the relatively formal arrangement of streets.

## Front Gardens

Front gardens are laid out with strips of mixed soft landscaping comprising areas of grass and low lying shrubs and trees. Landscaping and maintenance, including all lawn mowing, is managed by KAUST to ensure a uniformly attractive community. Standardized watering, pruning and landscaping practices ensure the entire residential environment remains visually attractive.





The management of front gardens by KAUST maintains harmony, protects the physical outlook of our neighborhoods and prevents excessive watering especially related to potted plants.

## Planting in Front Gardens

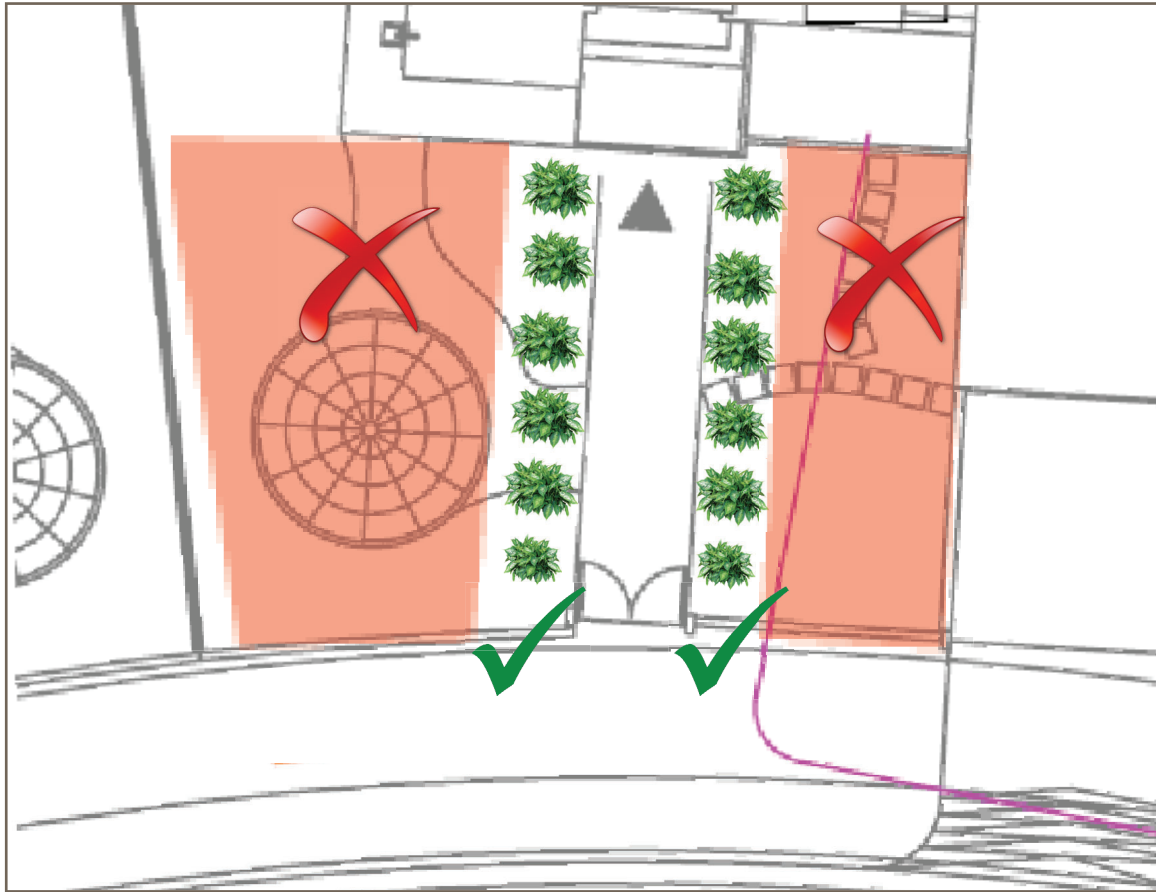
Residents enjoy a limited amount of flexibility through the introduction of low lying shrubs along the entrance walkways to their unit. This flexibility has contributed positively to general appearance and does not prejudice the character of the surrounding area.

The starting point to any assessment by the Gardening Services team is:

- i. the impact of additions on the ability to manage and maintain front gardens
- ii. whether plants species, scale and type fit in with the surrounding



## Areas of planting in front gardens



Well maintained planting along the entrance walkways with **low lying shrubs**



Front Gardens

Planting in  
Front Gardens

Back Gardens

Frequently  
Asked Questions





## Front Gardens

### Planting in Front Gardens

- Plants that do not make a positive contribution to the streetscape will be removed by the horticulture team as part of regular front garden maintenance
- Appropriate resident initiated planting should be maintained by residents

## Back Gardens

### Frequently Asked Questions





Installations are not permitted on the grassed area of front lawns for ease of maintenance and to avoid excessive use of water.



Front Gardens

Planting in  
Front Gardens

Back Gardens

Frequently  
Asked Questions





Food crops, banana plants

Plants considered inappropriate in front gardens:

- food crops and vegetables
- fruit trees
- fast growing invasive plants
- resident planted trees

Front Gardens

Planting in Front Gardens



Fast growing invasive plants

Fast growing invasive plants

Back Gardens



Frequently Asked Questions



# Back Gardens



**Nursery at the Central Services Administration District,  
near Gate 3**

Caring for residential back gardens is a resident's responsibility and residents enjoy the independence of growing plant varieties of their choosing. Horticulture Services has a plant nursery which has plants available for sale.

Whilst there is limited flexibility relating to front gardens, there are options available for back garden management. Residents are implementing innovative solutions for managing their gardens and considering xeriscaping.

Front Gardens

Planting in  
Front Gardens

Back Gardens

Frequently  
Asked Questions



# Back Gardens

Xeriscape is landscaping that reduces or eliminates the need for supplemental irrigation.

Non-standard semi-permanent or permanent installations should obtain approval through the Home Improvement Program (HIP). Requests may be submitted online at <https://hs-forms.kaust.edu.sa>.

To obtain partial xeriscaping design advice and plans please contact the Gardening Services team.

Back garden xeriscaping



Front Gardens

Planting in  
Front Gardens

Back Gardens

Frequently  
Asked Questions

# Frequently Asked Questions

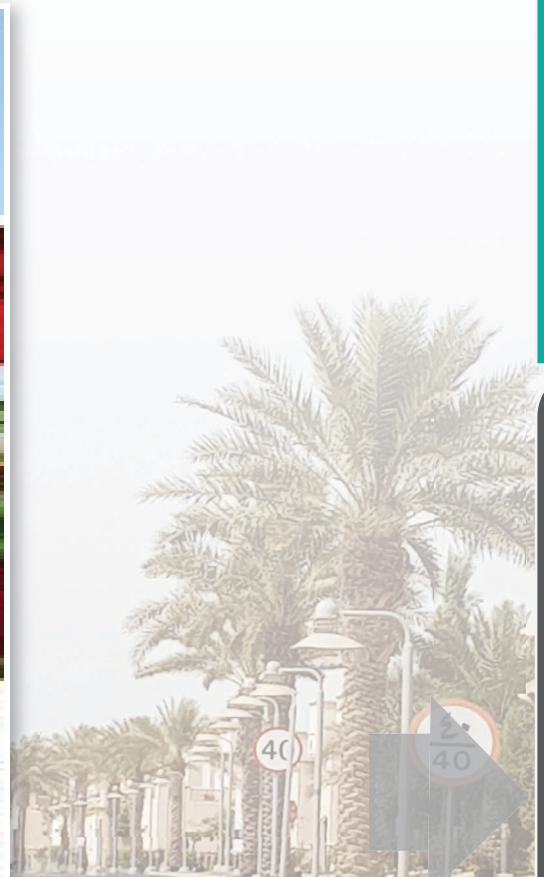
## What is the Gardening service?

The service that maintains all the green areas of landscaping at KAUST. Residents pay to have their grass cut and hedges trimmed. Additional services are available for approved landscaping projects.

Call 959 to open a ticket or email [fmcallcenter@kaust.edu.sa](mailto:fmcallcenter@kaust.edu.sa).

## How much will it cost?

The amount paid will depend on the number of people required and the length of service time. Contact the service to obtain prevailing rates.



Front Gardens

Planting in  
Front Gardens

Back Gardens

Frequently  
Asked Questions



# Frequently Asked Questions

## Why should I keep my garden tidy?

It is a condition of your Housing Agreement that you must keep your back garden clean and tidy and look after it to a reasonable standard, with all lawns cut and hedges, shrubs and trees properly trimmed and tidy. Maintaining your garden also prevents snakes, rodents and other pest infestations. We carry out regular estate inspections to ensure that this is happening.

## How much will I be charged for gardening services if I don't tend to my garden?

The amount of time committed, the size of the grassed area, need for grass replanting and overgrown trees and hedges are the main considerations in determining service charges. You would be responsible for meeting this cost.

**Contact the Gardening Services Team:**

**Email:** [gardening@kaust.edu.sa](mailto:gardening@kaust.edu.sa)

**Find us on the Services page of the Community Life Website**

**<http://communitylife.kaust.edu.sa>**

Front Gardens

Planting in  
Front Gardens

Back Gardens

Frequently  
Asked Questions

